

**MapKing! R12**  
**User Manual**  
**Dopod U1000**  
**Pocket PC**



Copyright © 2001-2007, MapAsia.com Limited

# Index

<b>Copyright and Logo .....</b>	<b>3</b>
<b>Important Message.....</b>	<b>4</b>
<b>1 Introduction.....</b>	<b>5</b>
1.1 <i>Product Description.....</i>	5
1.2 <i>Software and Map Version.....</i>	5
1.3 <i>MapKing™ Features .....</i>	6
<b>2 Installation &amp; Registration.....</b>	<b>7</b>
2.1 <i>Product Installation.....</i>	7
2.1.1 <i>Installation of main program.....</i>	7
2.1.2 <i>Installation of map data .....</i>	8
2.2 <i>Launch MapKing™.....</i>	9
2.3 <i>Map Registration .....</i>	9
2.3.1 <i>Obtain MKID .....</i>	9
2.3.2 <i>Obtain Registration Code Online .....</i>	9
2.4 <i>Switch Map.....</i>	10
2.5 <i>Close MapKing™ .....</i>	10
2.6 <i>Remove MapKing™ .....</i>	10
2.7 <i>Product Upgrade.....</i>	10
<b>3 Basic Functions.....</b>	<b>11</b>
3.1 <i>Basic Operations.....</i>	11
3.2 <i>Search Functions .....</i>	12
3.2.1 <i>Search Startup.....</i>	13
3.2.2 <i>Address Search .....</i>	13
3.2.3 <i>Address Range Search.....</i>	14
3.2.4 <i>POI (point of interest) Search .....</i>	14
3.2.5 <i>Intersection Search .....</i>	15

3.2.6	<i>Coordinates Search</i> .....	15
3.3	<i>My Favorite Function (My POI)</i> .....	16
3.3.1	<i>Build POI</i> .....	16
3.3.2	<i>Manage POI</i> .....	16
3.3.3	<i>Edit POI</i> .....	17
3.3.4	<i>Import/ Export POI</i> .....	18
<b>4</b>	<b>Route Planning</b> .....	<b>19</b>
4.1	<i>Routing Planning</i> .....	19
4.1.1	<i>Create Start Point/ Midway Point/ Destination</i> .....	19
4.1.2	<i>Enter Route Planning Page</i> .....	20
4.1.3	<i>Get Route Result</i> .....	20
4.1.4	<i>Adjust Route</i> .....	21
4.2	<i>Route Simulation</i> .....	21
<b>5</b>	<b>GPS Positioning</b> .....	<b>22</b>
5.1	<i>About GPS</i> .....	22
5.2	<i>GPS Startup</i> .....	22
5.2.1	<i>GPS Setup</i> .....	22
5.2.2	<i>GPS Setting</i> .....	23
5.2.3	<i>Navigation</i> .....	23
5.2.4	<i>GPS Mode</i> .....	24
5.2.5	<i>GPS Status</i> .....	25
<b>6</b>	<b>System Options</b> .....	<b>26</b>
6.1	<i>General Setting</i> .....	26
<b>7</b>	<b>Service and Support</b> .....	<b>27</b>
7.1	<i>Hardware Support</i> .....	27
7.2	<i>MapKing™ Software Support and Service</i> .....	27
7.3	<i>Forget Registration Code</i> .....	27

## Copyright and Logo

All title, ownership, derivative works and copyrights in the SOFTWARE are owned by MapAsia and incorporated suppliers. No right, title or interest in or to any trademark, logo or trade name of MapAsia or incorporated suppliers is granted under this AGREEMENT.

The Logo of MapAsia and MapKing™ is owned by City Country Consultancy Limited.

**Copyright of the GIS Database is owned by MapAsia.com Limited and data partners' that have come to contract with and be specified by MapAsia.com**

**Copyright of India Map Data is owned by Eicher Goodearth Ltd.**

**Copyright of Indonesia Map Data is owned by PT. Duta Astakona Girinda.**

**Copyright of Japan Map Data is owned by Alps Mapping Co., Ltd.**

**Copyright of Malaysia Map Data is owned by Geoinfo Services Sdn. Bhd.**

**Copyright of Philippine Map Data is owned by GIS Aranet, Inc.**

**Copyright of Taiwan Map Data is owned or represented by Maction Technologies, Inc.**

**Copyright of Thailand Map Data is owned by Lotus Consulting International Co., Ltd.**

**All other GIS Database is owned or represented by the MapAsia.com.**

### SOFTWARE PRODUCT LICENSE

The SOFTWARE is protected by local, international copyright laws and other intellectual property laws treaties.

MapKing™ is the registered logo and or logo of MapAsia.com Limited in the United States of American and other countries.

MapAsia is the registered logo and or logo of MapAsia.com Limited in the United States of American other countries.

Microsoft is the registered logo and or logo of Microsoft Corporation in the United States of American other countries.

Pocket Outlook® is the registered logo and or logo of Microsoft Corporation in the United States of American other countries.

Other undeclared LOGO and Licenses belong to the owner of the copyright owner.

**Copyright © 2001-2007**

**MapAsia.com Limited**

**City Country Consultancy Limited**

## Important Message

**IMPORTANT MESSAGE CONCERNING THE USE OF MAPKING™ BY VEHICLE DRIVER**  
TO ENSURE SAFETY DRIVING, WE STRONGLY ADVISE THAT A DRIVER SHOULD NOT OPERATE MAPKING™ WHILE DRIVING THE VEHICLE SIMULTANEOUSLY. A DRIVER SHOULD NEVER FOCUS HIS OR HER ATTENTION ON THE MAPKING™ DISPLAY WHILE DRIVING.

In case MapKing™ needs to be used inside a vehicle, we suggest that it should be operated by a passenger other than the driver or the driver should stop the vehicle at a convenient spot before starting to use MapKing™.

### **IMPORTANT MESSAGE CONCERNING ROUTE PLANNING**

The route planning function of MapKing™ is ONLY meant to be and should ONLY be used as a crude reference. IT SHOULD NEVER BE USED TO DETERMINE ACTUAL DRIVING DIRECTIONS. The Route Planning function of MapKing™ is subject to the following limitations:

- Whilst we have taken great care and endeavours in developing the product, we CANNOT guarantee that the road network data and routing calculations of MapKing™ are free of any omission or defect.
- The road network and traffic conditions in the real world are ever changing, MapKing™ being a pre-packaged product cannot reflect all these changes on a constant basis.
- Road network parameters specifically required for route planning, like one-way traffic indicator or turn restrictions at street crossing, are difficult or almost impossible to obtain for China or some other Asian countries. The lack of these data would significantly affect the performance of route planning.

### **IMPORTANT MESSAGE CONCERNING GPS TRACKING**

The GPS tracking function of MapKing™ works on GPS satellite signals broadcasted for civilian use. It is subject to inherent signal deviations and environmental interferences caused by surroundings and bad weather. We cannot guarantee nor specify a precise level of accuracy for the GPS positioning data displayed by MapKing™. It should also be noted that the United States Department of Defence, who builds and operates the GPS system, is free to turn off or down-grade the civilian signals of GPS during rare occasions like regional military conflict. Although MapKing™ should work with most GPS receivers on NMEA0183 signal output format regardless of their brand name or model; we cannot guarantee that MapKing™ integrates flawlessly with ALL GPS receivers available in the market.

# 1 Introduction

## **1.1 Product Description**

Thank you for using MapKing™!

MapKing™ is the first pan-region multilingual mobile mapping system in Asia managed by MapAsia.com Limited with input from leading Asian partners. It is a great tool for trip planning and to explore the huge potential market in Greater China and Asian countries (maps sold separately for different OS and language). MapKing™ is the first digital map provides English road name and place name in China and Asian cities. MapKing™ has firmly established market leader status as the bridge between western travelers and the rapid growing cities in East.

MapKing™ offers maps in English, Traditional Chinese and Simplified Chinese. Current maps are available for the following cities and regions. Please check the OS and Language before you purchased.

**Greater China: Beijing, Shanghai, Hong Kong, Guangzhou, China 2300 cities Points, Pearl River Delta Road Network, Shenzhen, Dongguan, Macau, Hong Kong Hiking Trails, Taipei, TaiChung, Tainan, Hsinchu, KaoHsiung.**

**Asia cities countries: Bangkok, Manila, Singapore with Johor, Jakarta, Delhi-NCR, Mumbai, Chennai, Bangalore, Hyderabad, Tokyo, Kuala Lumpur, Peninsula Malaysia, Ho Chi Minh City Tourist map, Seoul Tourist Map, Thailand Highways, Asia map.**

**Planned locations: Australia, New Zealand, Iceland; Greece...**

**Please note that tourist maps do not support GPS.**

We wish you enjoy our product and we appreciate your comments and suggestions. Please contact us by support@mapasia.com.

This manual is divided into three main sections:

First section: Installation & registration

Second section: Map features and functions

Third section: Route Planning and GPS functions

## **1.2 Software and Map Version**

**Product name:** MapKing! R12

**Software version information:** Refer to 'Tools' > 'Help' > 'About'

**Map version information:** Refer to 'Tools' > 'Help' > 'Map Info'

MapKing™ offers maps in English, Traditional Chinese and Simplified Chinese. Maps of different location with different language and different platform are separate products.

## **1.3 MapKing™ Features**

### **Main features:**

- High quality digital maps with latest map database
- 2D/ 3D Navigation
- GPS global satellite positioning function
- Route planning
- Real-time tracking of GPS position
- Intelligent Voice Assistance
- Multiple search modes
- Query by address/ Query by POI/ Query by intersection
- Query by area/ Query by coordinates
- User-defined view point

### **System requirement:**

- Pocket PC 2003 or above
- For Chinese Map, OS must support Chinese display
- Minimum 32 MB RAM
- 8M hard disk space required
- 64MB storage card is recommended
- The PC MUST have Microsoft ActiveSync 3.7.1 or above

### **Platform:**

- Pocket PC OS: Windows Mobile 5.0
- CPU: StrongARM/ XScale/ MIPS/ SH3
- RAM: 32MB (support storage card)

### **Support GPS:**

- RS-232/ CF/ PCMCIA/ Bluetooth/ USB/ Build-in GPS
- NMEA0183 output

## 2 Installation & Registration

### **2.1 Product Installation**

Installation of MapKing™ includes 2 parts:

1. Installation of main program.
2. Installation of map data.

**To obtain the best performance of MapKing, please install MapKing main program and map data in SD card.**

#### **2.1.1 Installation of main program**

Please reference to the following steps:

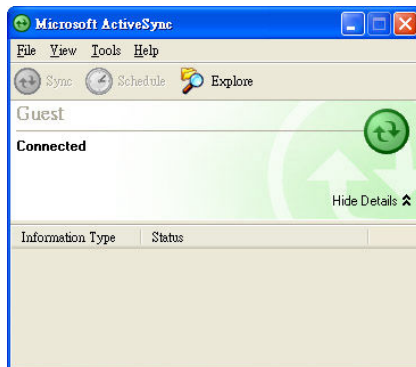
##### **Method 1:**

- Step 1: "Start" > "Programs" > "File Explorer".
- Step 2: Choose "Storage Card" from the pull down menu.
- Step 3: Run the Setup file in the "2577" folder.
- Step 4: Press "Yes" to install the program.
- Step 5: Press "Install" to install MapKing™ in U1000.

##### **Method 2:**

- Step 1: Enable ActiveSync connection between PC and your device PPC.
- Step 2: Locate the Setup\_MapKingR12.exe file from the CD-ROM and double click to start. For download version please run setup directly.
- Step 3: Click the installation button.

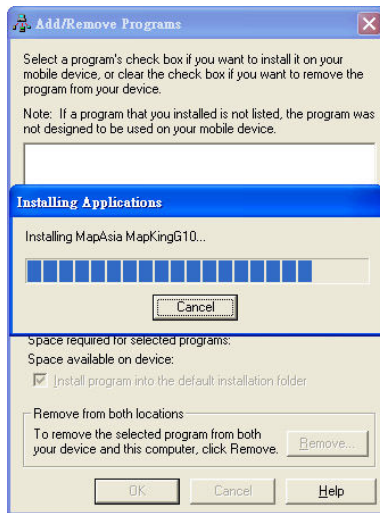
If ActiveSync does not start automatically, please press 'Start' > 'Program' to start ActiveSync. ActiveSync is available to download from [www.microsoft.com](http://www.microsoft.com).



《Figure2-1-1a》 Peer with PC by ActiveSync



《Figure2-1-1b》 Press 'Yes' to continue if you agree the End User License Agreement



《Figure2-1-1c》 Check Pocket PC for the installation status

### **2.1.2 Installation of map data**

MapKing™ offers an extensive range of map products and we cannot determine in advance the specific map(s) chosen by a customer. A DEMO Map is included in the set up file to verify that the core program has been installed and display successfully. To use a full map you have purchased, please follow the steps below:

- Step 1: Enable ActiveSync connection between PC and Pocket PC.
- Step 2: Copy the map file (File extension .G12) you have purchased from your CD-ROM.  
XXX\_Eng.G12 represents English map files.  
XXX\_TC.G12 represents Traditional Chinese map files.  
XXX\_SC.G12 represents Simplified Chinese map files.
- Step 3: Paste the file to Storage\Program Files\MapAsia\MapKingG12.

If you'd like to place the map file in your storage card, please create a folder name 'My Documents' and place it there. 'My Documents' is the fixed default path used by MapKing™ to locate map file.

## **2.2 Launch MapKing™**

MapKing™ is launched in the similar way like other software installed in your Pocket PC. You should find the MapKing™ program icon in the main screen. Tap it to launch MapKing™. If MapKing™ does not show up in the main screen, select 'Start' > 'Programs' to list all programs installed in your PPC and you could then launch MapKing™.

## **2.3 Map Registration**

All maps MUST be register to activate permanently. The maps in CD-ROM are for trial only. You may also download the trial version from <http://www.MapKing.com>. Please reference to 2.1 for installation of map data for trial and reference to 2.4 to switch map in program.

### **2.3.1 Obtain MKID**

After you start MapKing™ program from PPC screen is the registration page. The registration page is shown on the right. You should see MK ID that is generated from the unique hardware device signature embedded in the hardware.

**Attention: The MKID must be input correctly to achieve the correct registration code. Please aware the character/ number difference, e.g. 0 or O 1 or l.**



《Figure2-3-1a》 Registration

### **2.3.2 Obtain Registration Code Online**

From the quick manual, you will have a 'Product Authorization Code'. To get the 'Product Registration Code', please follow the steps below:

1. Connect to Internet and choose registration from <http://www.MapKing.com>.
2. Input the 'Product Authorization Code'.
3. Input the MKID and make sure you input the correct MKID.
4. Input the information request correctly. This information is confidential and will use for upgrade notification and promotion.
5. Get the 'Product Registration Code' for registration.

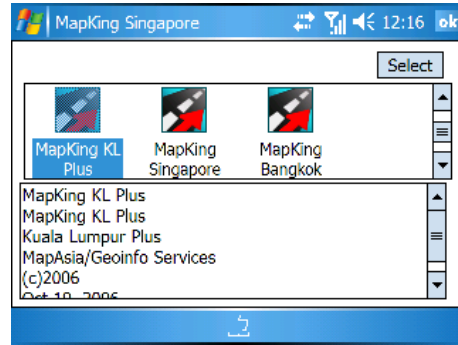
Remarks: In case there is a change of the MKID due to hardware problem, ROM upgrade or other reasons, please contact Hardware Service Centre or write to the MapKing™ support service for the new registration.

## **2.4 Switch Map**

User may have more than one map installed. Select 'Tools' > 'More' > 'Switch Map' will bring up a list of maps. Simply tap on any item within the list and press 'Select' to switch to a new map.



《Figure2-4-1a》 Press 'Tools' > 'More' > 'Switch Map'



《Figure2-4-1b》 Press 'Select'

## **2.5 Close MapKing™**

Press 'Tool' > 'Exit' to close MapKing™. Please be reminded that 'MapKing™' will run on the background if you do not exit the program, which occupied resource of your device.

## **2.6 Remove MapKing™**

Follow steps below to remove/ uninstall MapKing™ program:

1. Press 'Tool' > 'Exit' to close MapKing™.
2. Press 'Start' > 'Setting' > 'System' > 'Remove Program'.
3. Choose 'MapAsia MapKingR12' and press 'Remove'.

## **2.7 Product Upgrade**

The license allows end user to register ONLY ONE MAP out of the DEMO maps. End user need to purchase product upgrade. Registered user will receive our news via email. Visit <http://www.MapKing.com> for more information. Please read the briefing before you download the latest update.

**Strictly for bundle with Dopod U1000**

**NOT FOR SALE**

## 3 Basic Functions

### 3.1 Basic Operations

**Main-menu:**

**Find:** Search address, POI information, Intersection and X, Y

**Routing:** Route planning

**My Favorite:** Edit 'My Favorite'

**More:** Switch map, options and import/export 'My Favorite'

**Help:** Current MapKing version, map information and legends



《Figure3-1a》 Main-menu

**Tap-and-hold-menu:**

**My Favorite:** Add the stroke to 'My Favorite'

**Remove My Favorite:** Remove the self define POI from map if any

**Start Point:** Set as starting point

**Midway Point:** Set as midway point

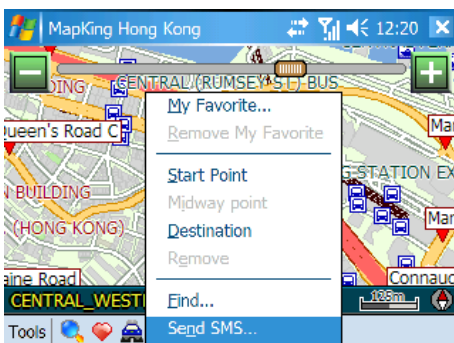
**Destination:** Set as destination

**Remove:** Remove Start Point/ Midway Point/ Destination if any

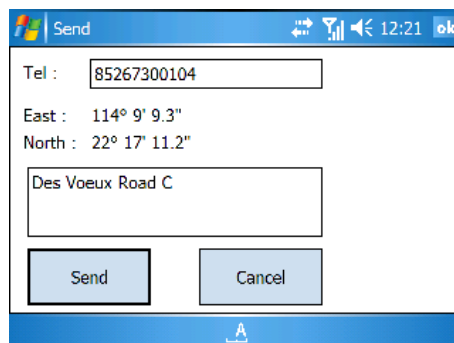
**Find:** Search nearby POI information

**Send SMS:** Send SMS telling the coordinates and address of the selected location.

**Send current location by SMS:**

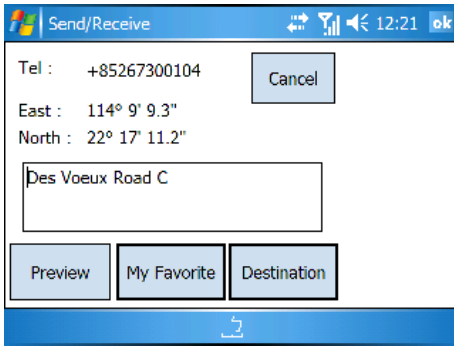


《Figure3-1b》 Tap-and-Hold your present location, then select 'Send SMS'



《Figure3-1c》 Enter the phone number and click 'Send'

**Receive location information by SMS:**



《Figure3-1d》 After receiving the SMS location, you can choose 'View Map', 'My Favorite' and 'Add as End'.



《Figure3-1e》 Press 'View Map', the location will be shown on map



《Figure3-1f》 Press 'My Favorite', the location will be added to 'My Favorite'



《Figure3-1g》 Click 'Add as End', the location will be set as destination

### **3.2 Search Functions**

Search functions includes Address, All POI, Intersection, area, coordinates...etc. Press the index of pages to switch different search functions.

### 3.2.1 Search Startup

You may start search page in two ways.



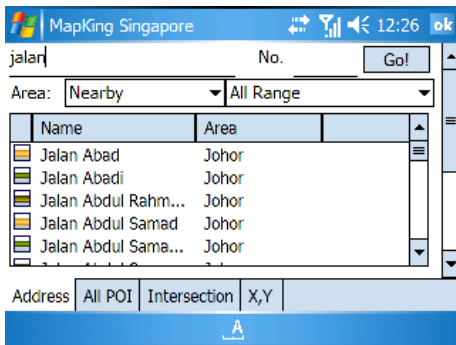
《Figure3-2-1a》 Press 'Tools' > 'Find'



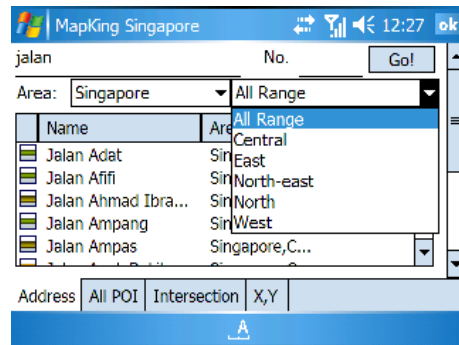
《Figure3-2-1b》 Press the magnifier icon

### 3.2.2 Address Search

This function is equivalent to wild card search. It will search for the appearance of the input string anywhere within the name field of the record. If "jalan" is used as the input string, then the search result would show 'Jalan Abad' and 'Jalan Abadi'.



《Figure3-2-2a》 List results that have the text string in alphabetical order, non case-sensitive



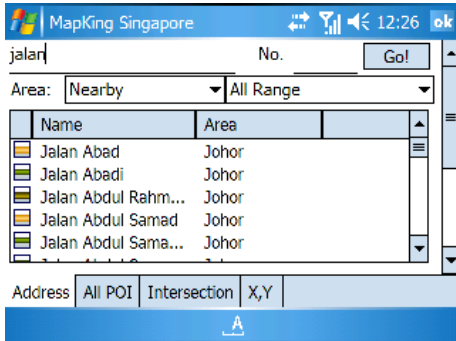
《Figure3-2-2b》 Obtain results by defined area

Remarks: This function used to compare every record from compressed database. Therefore, a longer processing time is required. User may define the search area to improve the performance of this search.

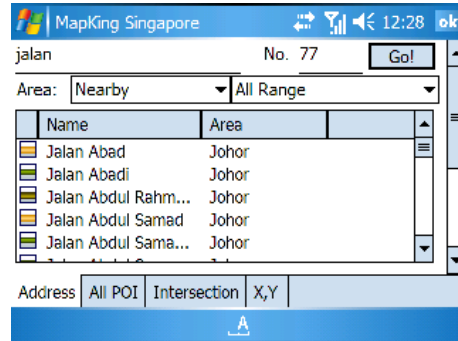
### **3.2.3 Address Range Search**

Enter any text string and address range. All records with their name matching the input text and number will be listed as the search result.

**\* Users can only use Address Range Search in Hong Kong and Singapore maps.**



《 Figure3-2-3a 》 Enter the text string to show all records related to it



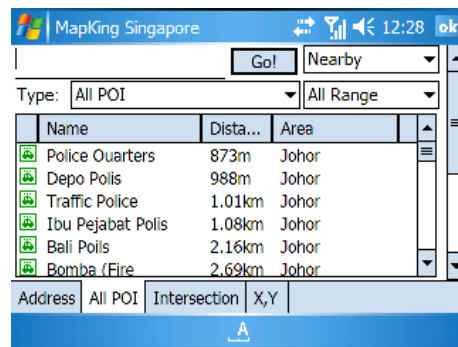
《 Figure3-2-3b 》 Enter the address range to show all records related to it

### **3.2.4 POI (point of interest) Search**

Select POI based on the following 2 criteria from the pull-down menu:

**Type :** Main POI category

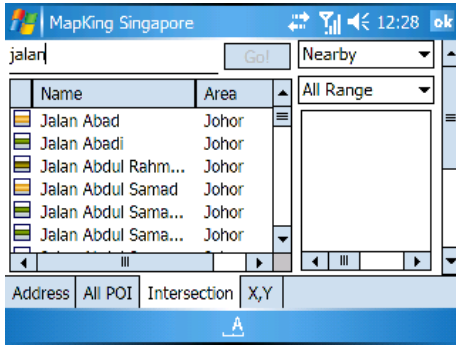
**Area options:** First-tier (default: Nearby) and second-tier (default: All range) districts  
Tap an item within the result list and select 'Go' to show its location in the map window.



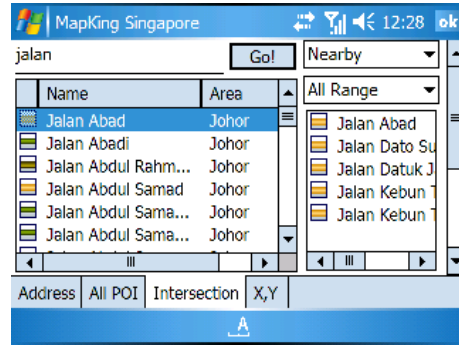
《 Figure3-1-5a 》 Choose the type and area

### **3.2.5 Intersection Search**

Enter the road name and all roads with their name matching the input text string will be listed. Select a road and all roads intersect with it will be listed.



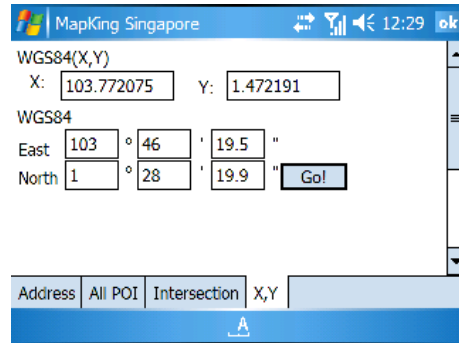
«Figure3-2-5a» Enter the road name to show all roads related to it



«Figure3-2-5b» Select a road and all roads intersect with it will be listed

### **3.2.6 Coordinates Search**

Enter the latitude and longitude (X, Y) coordinates either in decimal format or degree-minute-second format. Hit the 'Go' button and the map will be re-centered to the input coordinates.



«Figure3-2-6a» Enter the coordinates

### **3.3 My Favorite Function (My POI)**

This function lets you place and manage self-created POI (point of interest) in map.

#### **3.3.1 Build POI**

You can build POI in 2 ways:

**From the current map:** Tap-and-hold the position to call sub-menu and press 'My Favorite'.

**From search result:** Use any search method to search a POI, tap-and-hold the result and press 'My Favorite'.



《Figure3-3-1a》 Tap-and-hold on map and press 'My Favorite' to add POI

#### **3.3.2 Manage POI**



《Figure3-3-2a》 Press 'Tools' > 'My Favorite' to enter the POI management

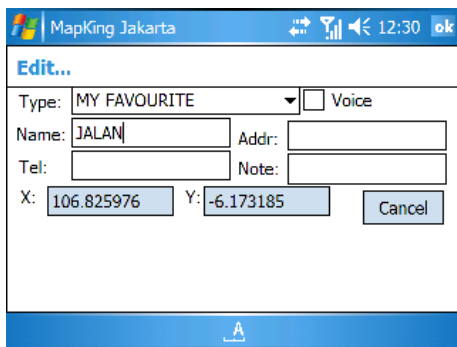
### 3.3.3 Edit POI



《Figure3-3-3a》 Choose the display mode of the type of 'My Favorite'



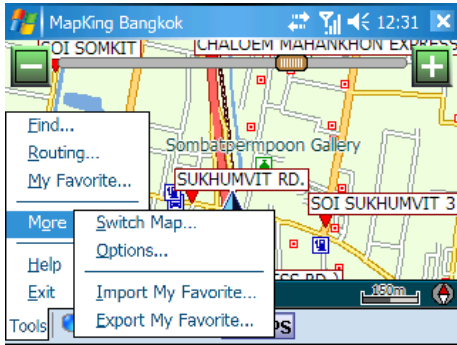
《Figure3-3-3b》 Tap-and-hold POI to call sub-menu



《Figure3-3-3c》 Press 'Edit' to edit POI and the 'Voice' checkbox is a reminder if your route is close to 'My Favorite' POI

### **3.3.4 Import/ Export POI**

After building up the POI database, you may need to backup the POI or share with friends.



《Figure3-3-4a》 Press 'Tools' > 'More' to import/ export 'My Favorite'

## 4 Route Planning

### IMPORTANT MESSAGE CONCERNING ROUTE PLANNING

The route planning function of MapKing™ is ONLY meant to be and should ONLY be used as a crude reference. IT SHOULD NEVER BE USED TO DETERMINE ACTUAL DRIVING DIRECTIONS. The Route Planning function of MapKing™ is subject to the following limitations:

- Whilst we have taken great care and endeavours in developing the product, we CANNOT guarantee that the road network data and routing calculations of MapKing™ are free of any omission or defect.
- The road network and traffic conditions in the real world are ever changing, MapKing™ being a pre-packaged product cannot reflect all these changes on a constant basis.
- Road network parameters specifically required for route planning, like one-way traffic indicator or turn restrictions at street crossing, are difficult or almost impossible to obtain for China or some other Asian countries. The lack of these data would significantly affect the performance of route planning.

### **4.1 Routing Planning**

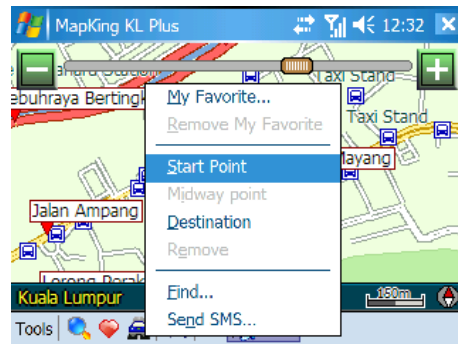
#### **4.1.1 Create Start Point/ Midway Point/ Destination**

To initiate route planning, at least 2 routing points (Start Point, Midway Point and Destination) must be assigned.

Tap-and-hold at the precise spot and select 'Start Point' / 'Midway Point' / 'Destination' to add a routing point. It should be noted that route planning is calculated from the embedded road network data. Accordingly, the routing points should be placed either on top of or very close to the street lines.

There are 3 ways to setup routing point:

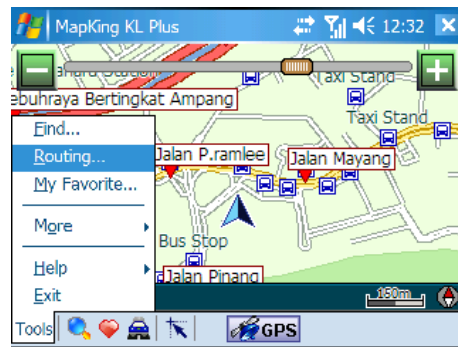
1. Tap-and-hold on main map.
2. Tap-and-hold in 'My Favorite' page.
3. Tap-and-hold from search result.



《Figure4-1-1a》 Tap-and-hold and choose 'Start Point' / 'Midway Point' / 'Destination'

### **4.1.2 Enter Route Planning Page**

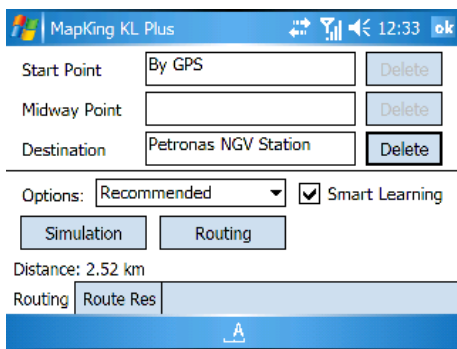
Once you have 2 or more routing point, you can start the route planning.



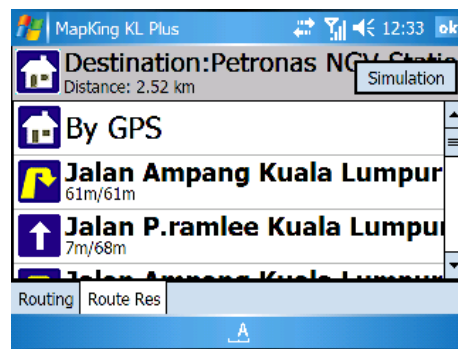
《Figure4-1-2a》 Press ‘Tools’ > ‘Routing’ or press the car button in the toolbar

### **4.1.3 Get Route Result**

In routing planning page, press ‘Routing’ to achieve the result.



《Figure4-1-3a》 Press ‘Routing’ and the total distance



《Figure4-1-3b》 Turn-by-turn result will be display if you press ‘Route Result’

### **4.1.4 Adjust Route**

You can adjust the results by calculate condition.

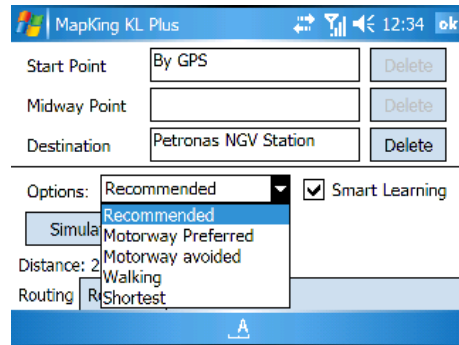
**Default:** This option uses the recommended option to calculate route

**Motorway preferred:** Assigns high priority to expressways, highways and freeways and avoid secondary roads and streets

**Motorway avoided:** Avoids expressways, highways and freeways

**Walking:** Walkway would be selected in this option for routing and walkway in adverse direction and motorway would not be considered.

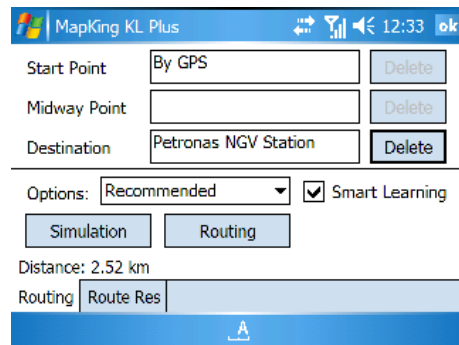
**Shortest:** This option ignores road class parameters and calculates routes purely on length of road segments, but this is rarely used since the shortest route in many cases does not mean the fastest route



《Figure4-1-4a》 Choose calculate condition

## **4.2 Route Simulation**

MapKing™ provides more than result and paths. We also provide 2D/ 3D simulation. After Start Point and Destination have been created, with the routing result you may simulate the course of the planned route and have further adjustment.



《Figure4-2-1a》 Press ‘Simulate’ to enter simulation mode

## 5 GPS Positioning

### IMPORTANT MESSAGE CONCERNING GPS TRACKING

The GPS tracking function of MapKing™ works on GPS satellite signals broadcasted for civilian use. It is subject to inherent signal deviations and environmental interferences caused by surroundings and bad weather. We cannot guarantee nor specify a precise level of accuracy for the GPS positioning data displayed by MapKing™. It should also be noted that the United States Department of Defence, who builds and operates the GPS system, is free to turn off or down-grade the civilian signals of GPS during rare occasions like regional military conflict. Although MapKing™ should work with most GPS receivers on NMEA0183 signal output format regardless of their brand name or model; we cannot guarantee that MapKing™ integrates flawlessly with ALL GPS receivers available in the market.

Please read the package for product information for product support GPS. In this chapter we will discuss how to setup and operate the GPS functions, and the functions provided by MapKing™ with GPS.

### **5.1 About GPS**

GPS (Global Positioning System) is developed and maintained by the US Defence Department. The system was initially deployed for military use but was later open for civilian navigation. The system comprises of more than 24 satellites on different orbits. The GPS receiver on the ground picks up signals from at least three satellites and calculates its real time position by a set of mathematical formulas generally known as 'triangulation'.

GPS receivers must maintain line-of-sight with the satellites. GPS will not work indoors and its accuracy tends to degrade significantly when the receiver is located under a sheltered area or near high-rise building structure or terrain.

### **5.2 GPS Startup**

#### **5.2.1 GPS Setup**

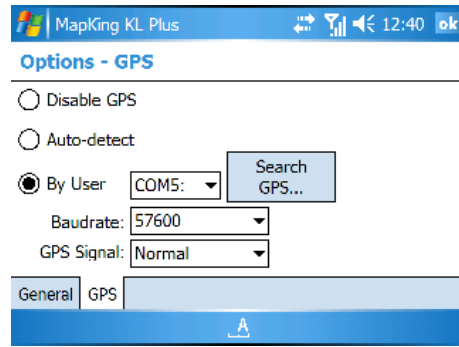
GPS receiver needs to establish clear line of sight to receive signals from satellites orbiting in the space. If the receiver is placed inside a vehicle or vessel, an extended antenna is normally required to pick up signals beyond the enclosed area of the vehicle or vessel.

### 5.2.2 GPS Setting

**Disable:** Stop any track playing or GPS real-time tracking

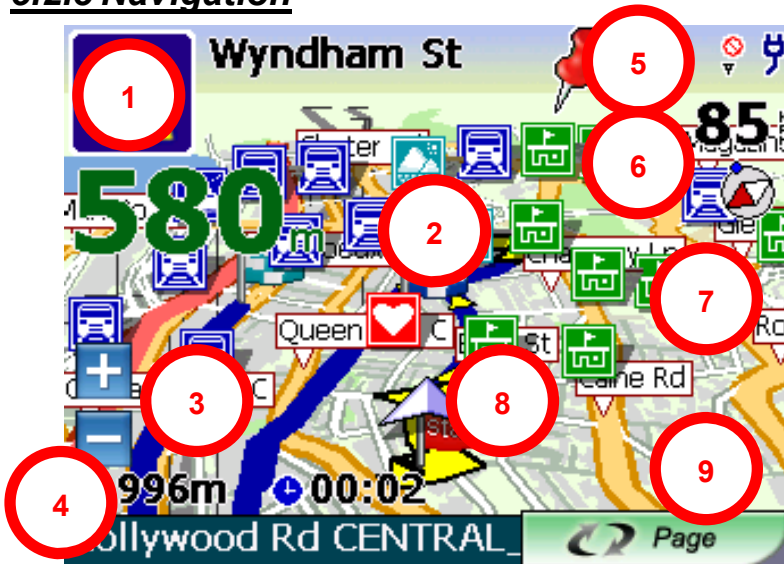
**Auto-detect:** Detect most brands of GPS in the market

**By User:** User select



《Figure5-2-2a》 Press 'Tools' > 'More' > 'Options' > 'GPS'

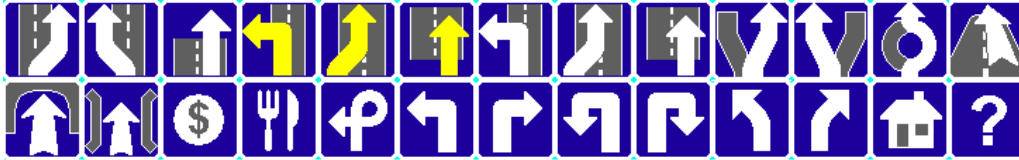
### 5.2.3 Navigation



《Figure5-2-3a》 Press 'GPS' in the toolbar to enter GPS mode

1. Destination setting or next turn indicator
2. Enter GPS mode
3. Distance to destination and estimate time of arrival
4. District name
5. GPS and battery status
6. Speed of vehicle
7. Compass (North as red)
8. Current position
9. Switch view mode

The road sign defines in MapKing™ (from left to right):



《Figure5-2-3b》 Road sign summary

Upper row (from left to right)	Lower row (from left to right)
Leaving expressway along the right lane	Entering tunnel ahead
Leaving expressway along the left lane	Entering bridge ahead
Leaving expressway	Tollgate
Entering expressway along the left lane	Rest area
Entering expressway along the right lane	Interchange
Entering expressway	Turn left at intersection ahead
Entering freeway along the left lane	Turn right at intersection ahead
Entering freeway along the right lane	U-turn to the left at intersection ahead
Entering freeway	U-turn to the right at intersection ahead
Stay on the right lane	Stay on the left
Stay on the left lane	Stay on the right
Entering interchange	Distance to destination
Entering elevated road	Please set destination

### 5.2.4 GPS Mode

**Destination:** All sorts of destination options are available for selection: 'Go Home', 'Recent', 'Favorites', 'Address', 'Intersection', 'All POI'.

**M.O.B.:** Mark the point of GPS position, only work when GPS is on.

**Routing:** Route planning options including 'End Navi.', 'Delete Midway Point', 'Re-Computing Route', 'Route Result', 'Avoidance' and 'Route Options'.

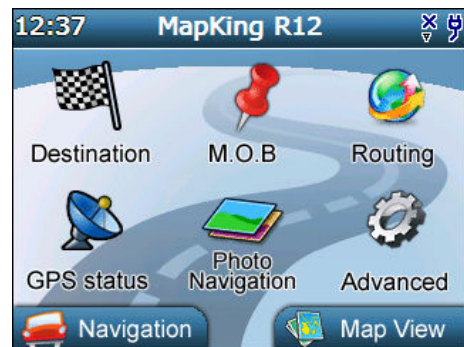
**GPS status:** The GPS status are shown. Blue point indicates good GPS signals available for positioning whereas Red point cannot.

**Photo Navigation:** Set destination by choosing in a photo album.

**Advanced:** Setting of 'Voice', 'Map Color', 'Viewport', 'Display' and 'System' are available.

**Navigation:** Back to navigation mode.

**Map View:** Back to map view.



《Figure5-2-4a》 Press the center of the screen in navigation

### **5.2.5 GPS Status**

GPS signals are used for positioning. GPS signals that are not strong enough will be displayed as red points, which cannot be used. When the GPS is positioning, most of the points will be red points. Please wait 5 to 10 minutes.

**Altitude:** For 3D GPS positioning system will need 4 good satellite signal or above

**Velocity:** Speed of vehicle by reading GPS

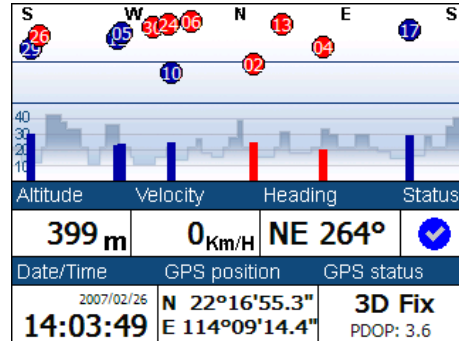
**Heading:** The estimate direction heading from last position

**GPS Status:** 2D/ 3D positioning

**Status:** Tick for successful position, question mark for GPS warming up, cross for GPS not available

**Date/ Time:** The clock is accurate only until positioning succeeds

**GPS position:** Can be fixed only with minimum 3 or more satellites detected



《 Figure5-2-5a 》 Press 'Advanced' > 'GPS' in GPS mode

## 6 System Options

### 6.1 General Setting

**Unit:** The system provides two different units of distances. The two available units are Kilometers and Miles.

**Interface:** The system provides two interface languages. The two available languages are Traditional Chinese and English. The default language is English.

**Map Detail:** The system provides two different display schemes (profiles). The appropriate profile for each map is linked to the map file and is deployed automatically without the need for manual selection. You may, however, temporarily switch to a different profile during a working session. The two available profiles are:

**Standard:** Applicable to all maps except Hong Kong and China Highways

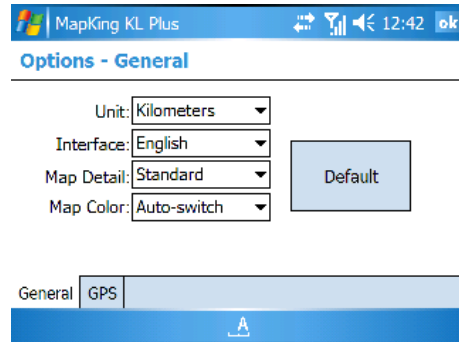
**Hong Kong:** Specially designed for the congested map features within the Hong Kong map.

**Map Color:** The system provides three different display modes. The three available modes are:

**Auto-switch:** Auto-switch between day time mode and night time mode according to the time

**Day:** Day time mode

**Night:** Night time mode



《Figure6-1-1a》 Press 'Tools' > 'More' > 'Options'

## 7 Service and Support

### **7.1 Hardware Support**

Please refer to your GPS manufacturer.

### **7.2 MapKing™ Software Support and Service**

Please send email to following with your 'Product Authorization Code', MK ID and email during registration and a detailed description of the problem you encounter.

<b>Countries/ Cities</b>	<b>Email</b>
China	service@mapasia.com
Hong Kong	support@mapasia.com
India	mapking@spin.co.in
Indonesia	mapking@dag.co.id
International	support@mapasia.com
Japan, Korea, Thailand, USA	support@mapasia.com
Malaysia	malaysia.support@mapasia.com
Philippine	support@inlis.ph
Singapore	mapking@eastgear.com
Taiwan	service@mactiontech.com

### **7.3 Forget Registration Code**

Visit <http://www.MapKing.com>, click 'Registration' and pick 'Forget Registration Code' at the bottom of the registration page. Key in 'Product Authorization Code' and registered email. The 'Registration Code' will be immediately display on the screen.

**– End of User Manual –**